

Hawaiian Civic Club of Wahiawā... 'Ano'ai



"e kūka'awe i nā kapu o Kūkaniloko no ka mea aloha nō ho'i kākou ia lākou i nā kau a kau..."
"to guard the kapu of Kūkaniloko because we love them for all time..."

*ka pa'i ana helu
Kanaōno kūmamākolu
Pepeluali 2k15*

Mahalo iā kupuna Roselia Poepoe a me kupuna Roselani Hall, Founding & Charter Members of 55 years E Ola Nō! Editor: *Kalimapau*

2.11.2k15...Our February 11th monthly HCCW meeting was filled with surprises. The Helen C. Kane Awards are given annually to each Hawaiian Civic Club by the Association of Hawaii Civic Clubs (AOHCC). Two members are nominated who provide services for our Hawaiian community at large and who help keep alive the mission and vision of founder, Prince Jonah Kuhio. This year two awards were presented by *Hope Pelekikena* Tom Lenchanko to *lālā 'ōiwi* Noelani DeVincent, Membership and Fundraiser Committee Chairperson; and *lālā 'ōiwi Kakau 'Ōlelo* Krystal-Lee Tabangcura. *Kakau 'Ōlelo* (Secretary) Krystal-Lee Tabangcura was awarded for her commitment to bring to completion the tedious process of attaining the Hawaiian Civic Club of Wahiawā 501(c)(3) Nonprofit, effective September 28, 2014. She also invested several months of her time, effort and *mana'o* to collect, compile and format necessary information required by the Office of Hawaiian Affairs (OHA) and Hawaiian Civic Club of Wahiawā (HCCW) Stewardship of Kūkaniloko Proposal. Upon completion, *Hope Pelekikena* Lenchanko hand-carried documents to OHA on behalf of HCCW in October of 2013. We, members of the Hawaiian Civic Club of Wahiawā, commend her excellent work in fulfilling her duties in her third term as *Kakau 'Ōlelo* of HCCW. Congratulations Krystal-Lee Tabangcura, 4th generation *nā lālā 'ōiwi 'Āina Thomas* of the Hawaiian Civic Club of Wahiawā. Your *kuleana* is well-executed and truly appreciated by your fellow HCCW members...*maika'i kela!*



Kakau 'Ōlelo Krystal-Lee Tabangcura and HCCW Hope Pelekikena Tom Lenchanko.



Juliet Kauhane, HCCW Kupuna Roselani Hall, & A. Noelani DeVincent

Our meeting was further blessed by the presence of *lālā 'ōiwi* Kupuna Roselani Hall. Kupuna Roselani, who is now 87, is one of the last two living Founding and Charter Lifetime Members of 55 years, present at the establishment of the Hawaiian Civic Club of Wahiawā on November 10, 1960. She joined us with her daughter Juliet. Her *mo'opuna*, *lālā 'ōiwi* Noelani DeVincent was celebrating her birthday. What a special gift to see her grandma at our meeting! Noelani was also awarded the Helen C. Kane Award for the execution of her duties as Membership Committee Chair and Fundraiser Chair. She perpetuates traditional comprehension as Makua of Central O'ahu Kūpuna/Mākua Hawaiian Studies Program at Ka'ala Elementary School and is Kumu Hula of *Nā Papa Hula o Noelani of Wahiawā*. Congratulations! Noelani DeVincent, 3rd generation *nā lālā 'ōiwi 'Āina Helenihi...eō*

HIKI NŌ "Opihi Survey" by Ke Kula Niihau O Kekaha [Published on November 15, 2013] We join students from *Ke Kula Niihau O Kekaha* as we travel to the west shore of Kaua'i, where biologists from Texas A & M University study the declining populations of *opihi*. Researcher Dr. Christopher Bird hopes to show the correlation between drops in the *opihi* populations and increases in human populations. *Haumana* from *Ke Kula Niihau O Kekaha* were given the chance to help Dr. Bird in his research. Please enjoy this video as you listen to the beautiful 'ōlelo Hawai'i, spoken so eloquently by *nā lālā 'ōiwi Ke Kula Niihau O Kekaha*. Our responsibility is to prepare for the next seven generations.

<https://www.youtube.com/watch?v=oVccHxt4YI&feature=youtu.be>

Hawaiian Civic Club of Wahiawā... 'Ano 'ai

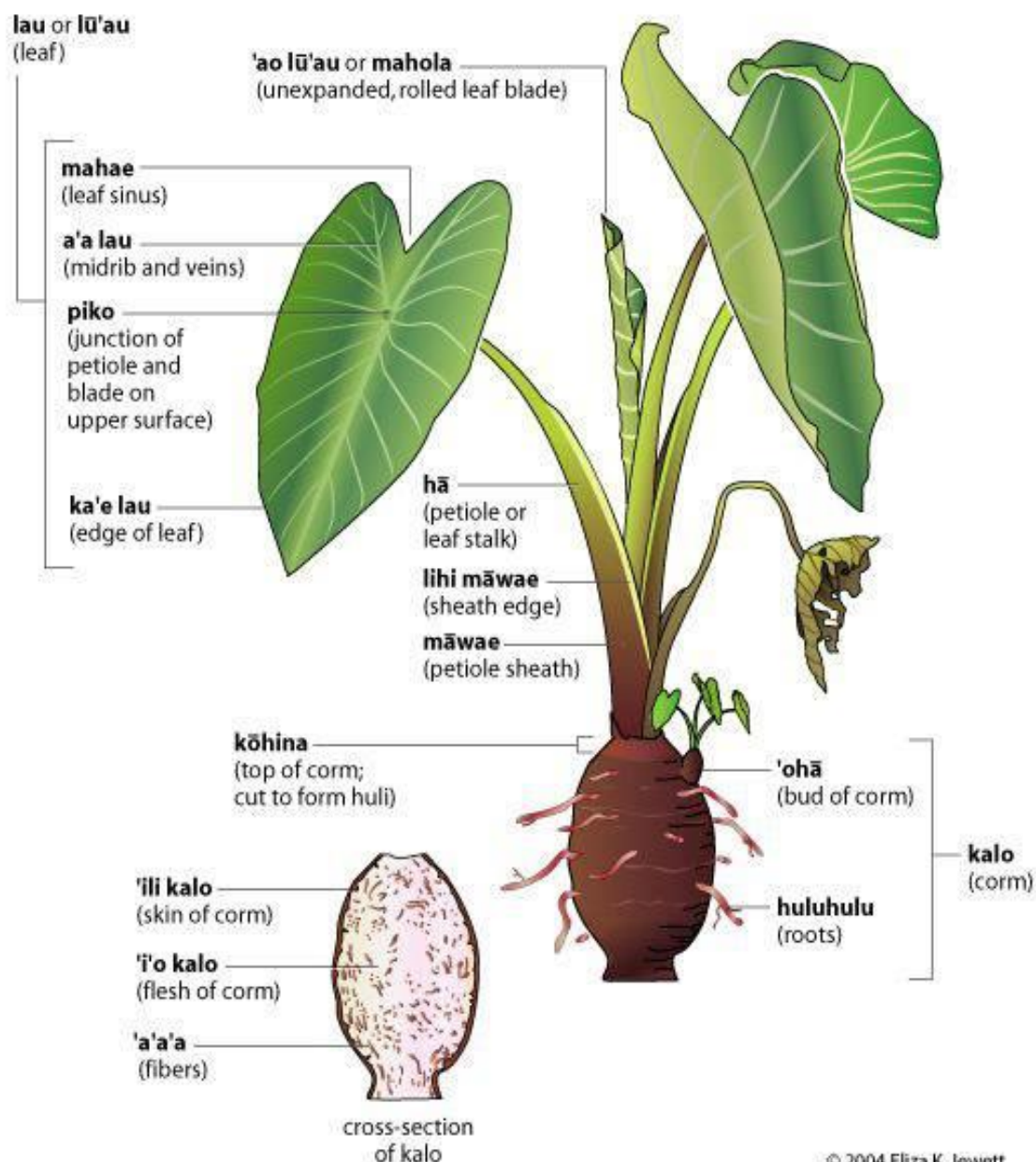


"e kūka'awe i nā kapu o Kūkaniloko no ka mea aloha nō ho'i kākou ia lākou i nā kau a kau..."
"to guard the kapu of Kūkaniloko because we love them for all time..."

ka pa'i ana helu
Kanaōno kūmamākolu
Pepehualī 2k15

Mahalo iā kupuna Roselia Poepoe a me kupuna Roselani Hall, Founding & Charter Members of 55 years E Ola Nō! Editor: *Kalimapau*

'Ōlelo no'eau... Mary Kawena Pukui #1447... **Kalo kanu o ka 'āina...** Taro planted on the land. Natives of the land from generations back.



© 2004 Eliza K. Jewett

Mahalo HCCW lālā 'ōiwi Hanauumiokanoena for this "KALO" Educational Chart done by Eliza K. Jewett in 2004

Hawaiian Civic Club of Wahiawā... 'Ano'ai



"e kūka'awe i nā kapu o Kūkaniloko no ka mea aloha nō ho'i kākou ia lākou i nā kau a kau..."
 "to guard the kapu of Kūkaniloko because we love them for all time..."

ka pa'i ana helu
Kanaōno kūmamākolū
Pepeluali 2k15

Mahalo iā kupuna Roselia Poepoe a me kupuna Roselani Hall, Founding & Charter Members of 55 years E Ola Nō! Editor: *Kalimapau*

Sacred Numbers by Kupuna Hale Makua – Arithmetica ... Introduction to Sacred Numbers & Creation by Kupuna Hale Makua. Filmed in June 1998. Produced by the Worldwide Indigenous Science Network. He shares how the creative flow of numbers [from 1 to 12] moves through our bodies. <https://www.youtube.com/watch?v=Qtmhu-9HVQc>

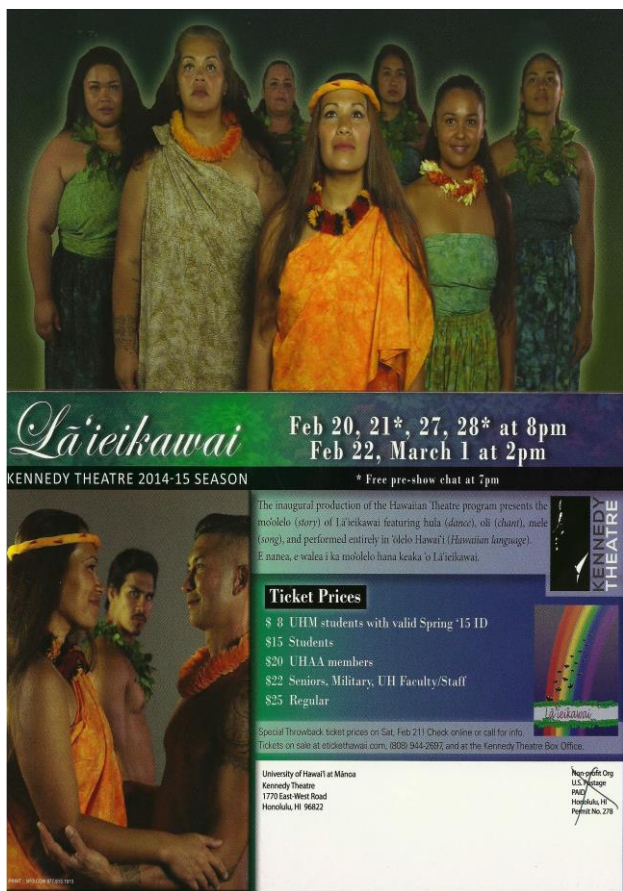


Photo by Vicki Pakele

2.19.2k15... Thanks to *lālā ho'okama* Connie Moore who so kindly provided tickets for *nā lālā 'ōiwi* Pelekikena "Malia" Doo, Pu'uku Kalimapau, and Vicki Pakele – snapping this picture – to enjoy this one of a kind production of **Lā'ieikawai** at the Kennedy Theatre on the University of Hawaii Campus. We enjoyed a preview of this beautiful production expressed completely in 'ōlelo Hawai'i. It was great night out for some of us *nā wahine o* Hawaiian Civic Club of Wahiawā...mahalo nui loa

Hawaiian Civic Club of Wahiawā kupuna, lālā 'ōiwi Uncle Pila Short...

During a visit to Kūkaniloko by 85 *haumana* of Mā'ili Elementary School in 2012, navigational training through the studying of the stars in the heavens that rise and set over Kūkaniloko was shared. Students were in awe that the navigational school was located in central O'ahu instead of near the beaches. It was further explained that navigation is the knowledge and understanding of the stars whether on land or on the oceans. They got it! Uncle Pila left them with this profound statement as his father taught him:

"The Polynesians been sailing Oceania since before the Caveman came out of the cave!" Some disagree. Many agree. Science is beginning to find evidence that this *mo'olelo* may be true. The completion of our Hōkūle'a Global Voyage will show the scientists that it is possible and is true. Here is an excerpt from the TV special, **"Who Really Discovered America?"** <https://www.facebook.com/video.php?v=1498015650474377>



Kupuna Uncle Pila Short by Vicki Pakele

Hawaiian Civic Club of Wahiawā... 'Ano'ai



"e kūka'awe i nā kapu o Kūkaniloko no ka mea aloha nō ho'i kākou ia lākou i nā kau a kau..."
 "to guard the kapu of Kūkaniloko because we love them for all time..."

ka pa'i ana helu
Kanaōno kūmamālohu
Pepeluali 2k15

Mahalo iā kupuna Roselia Poepoe a me kupuna Roselani Hall, Founding & Charter Members of 55 years E Ola Nō! Editor: Kalimapau



Papa Henry Doo with Pelekikena Marie "Malia" Doo at the HCCW booth. Dr. Lee Buenconsejo-Lum, MD, mingles with Health Care representatives

2.14.15 ...Wahiawā Center for Community Health (WCCH) ... HCCW's lālā ho'okama Mary Talon is President of WCCH, a nonprofit organization. After a number of years of preparation, WCCH is excited to move forward. On Saturday, February 14th at Dots Restaurant in Wahiawā, WCCH sponsored a mini-health fair and public hearing. HCCW's Kahu Peter Lonoae'a gave the Blessing in the beginning of the event. *Mahalo!* Some of the Health Care Organizations present were the Community Alliance for Mental Health and Hawaiian Eye who were available for consultation and mini exams. Wahiawā General Hospital was there to educate the public on Mammograms and Bone Density testing. The Legacy of Life was there to talk about Organ Donors. HCCW participated with our Kūkaniloko Educational Displays and sharing of *ki'eke pa'akai pu'upu'u*. The ancients of the sacred uplands of Wahiawā chose Kūkaniloko for the birthing of the highest *ali'i* beginning in A.D. 1060 with Kapawa and for several hundred years to follow. A video of the first WCCH Health Fair played onstage which included footage from and about Kūkaniloko. HCCW members attending were Papa Henry and Pelekikena "Malia" Doo, Kupuna Aloha Kekipi, Kalimapau, Bruce and Roslyn Pascua and Mary Talon. A public hearing was held at noon allowing questions from the floor. A light healthy lunch followed. Despite the rainy weather, many attended.

LEILEHUA HIGH SCHOOL PRESENTS

2ND'S at LEILEHUA

*Where the finest Food Trucks & Food Vendors
take Wahiawa by storm!*

Friday, March 13th 4:00 pm - 8:00 pm

<https://www.facebook.com/2ndsatilelehua>



Next Hawaiian Civic Club of Wahiawā Monthly Meeting ... Second Wednesday, March 11th, 2k15
 Wahiawa Police Station Conference Room at 7 pm. You are welcome to join us!